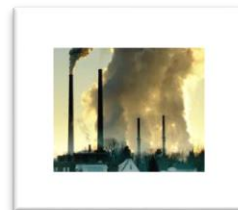
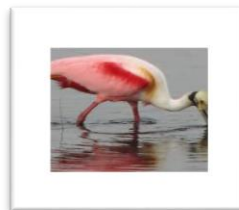
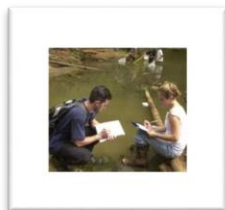
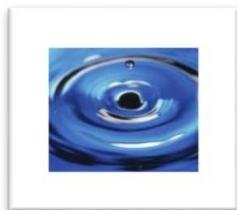


# 2016 Summer Course Offerings

## Environmental Studies

Graduate Director: Professor Donald Morris  
Undergraduate Director: Professor Al Wurth



Major and minor declaration forms are available in the Office of Interdisciplinary Programs, 31 Williams Hall, Suite 101

### **ES 093 Freshmen Supervised Internship in the Environmental Initiative** (SS, HU, NS) 1-2 credits

Experiential learning opportunities supervised by EI faculty including fieldwork, data collection or analysis, literature review, and information management. Consent of supervising faculty is required. The experience may be related to either environmental studies or environmental science depending upon the discipline of supervising faculty member. *Instructor permission required.*

### **ES 131 Internship** 1-2 credits

Practical experience in the application of environmental studies for both on- and off-campus organizations. Course is designed to provide credit for supervised experiential learning experiences. May be repeated for credit up to four credits. *Instructor permission required.*

### **ES 181 Independent Study** CRN (HU, SS) 1-4 credits

Directed readings or research on an Environmental Studies topic. May be repeated for credit up to four credits. *Instructor permission required.*

### **SDEV, ARCH 195-10 Nudging the L.V.: Propositions for Sustainable development** CRN 21433 4 credits

### **ES, ARCH, POLS 395-10 Nudging the L.V.: Propositions for Sustainable development** CRN 21436 3 credits

The Lehigh Valley is one of the most rapidly developing regions in the Northeast. This course proposes to use the LV as a topic of research, design, and proposition. We will address questions posed by the scale of development in the region to propose interventions that maximize the beneficial impact that can accompany the growth. Investigation will be encouraged to engage the design, engineering, environmental, economic, historical, sociological, geographic, cultural, and political aspects of contemporary development. The goal is to identify latent opportunities within current trends to maximum and broaden their benefit.

Although modeled on design studio methodology, the course will be interdisciplinary in nature and open to students from all backgrounds **Professor Brent Stringfellow**

Summer session 1 - M, W; 4:00 - 6:50 p.m.

### **ES 293 Supervised Internship in Environmental Initiative** (HU, NS, SS) 1-4 credits

Experiential learning opportunities supervised by EI faculty including fieldwork, data collection or analysis, literature review, and information management. The experience may be related to either environmental studies or environmental science depending upon the discipline of supervising faculty member. The students should collaborate with faculty to develop a work plan that describes the credits requested as well as the activities included in the internship and expected outcomes. *Instructor permission required.*

### **ES, POLS 314-10 Urban Agricultural Policy, Planning and Practice** CRN 21361 (SS) 4 credits

### **ES, POLS 414-10 Urban Agricultural Policy, Planning and Practice** CRN 21362 (SS) 3 credits

Review of urban agriculture and greening programs in growing social movement to strengthen neighborhoods, promote healthier living, and create localized and sustainable food economies. Students consider these programs in relation to national farm policy and develop urban agriculture projects with community partners. Case studies illustrate how improving food access, beautifying vacant land, and reducing farm-to-table distances, are creatively and successfully combined. A Rodale Institute farmer teaches half of the classes, providing hands-on gardening and farming experience at a community garden. **Professor Karen Beck-Pooley**

Summer session 1 - M, W; 1:00 - 4:00 p.m.

### **GS, SOC 319-10 The Political Economy of Globalization** CRN 21372 (SS) 4 credits

This course studies the relationship among economic, political and cultural forces in an era of globalization. Focus is on how global capitalism, the world market and local economics shape and are shaped by social, cultural and historical forces. Topics include political and cultural determinants of trade and investment; culture and the global economy; global capitalism, especially studied through the lens of culture; globalization and patterns of economic growth; crosscultural study of consumerism; poverty and

inequality; the interplay of foreign and domestic economic policy; international economic organizations, such as the World Trade Organization, the International Monetary Fund, and the World Bank, and globalization and national development.

**Professor Kelly Austin**

Summer session 1 - on-line

**ES, TLT 368-10 Teaching and Learning with Geospatial Tools** CRN 21453 3 credits

Exploration of geospatial tools, including but not limited to global positioning systems (GPS), geographic information systems (GIS), and related visualization tools (e.g., Google Earth). Application of these tools and techniques to instructional settings, including appropriate pedagogy and assessment. **Professor Thomas Hammond**

TWRFU 8:30am - 12:50pm

MTW 8:30am - 12:50pm

**ES, ARCH, POLS 395-10 Nudging the L.V.: Propositions for Sustainable development** CRN 21436 3 credits

The Lehigh Valley is one of the most rapidly developing regions in the Northeast. This course proposes to use the LV as a topic of research, design, and proposition. We will address questions posed by the scale of development in the region to propose interventions that maximize the beneficial impact that can accompany the growth. Investigation will be encouraged to engage the design, engineering, environmental, economic, historical, sociological, geographic, cultural, and political aspects of contemporary development. The goal is to identify latent opportunities within current trends to maximum and broaden their benefit.

Although modeled on design studio methodology, the course will be interdisciplinary in nature and open to students from all backgrounds **Professor Brent Stringfellow**

Summer session 1 - M, W; 4:00 - 6:50 p.m.

**ES 483 Independent Study** 1-3 credits

*Instructor permission required.*

**ES 490 Thesis** 1-6 credits

*Instructor permission required.*